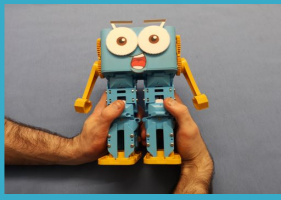


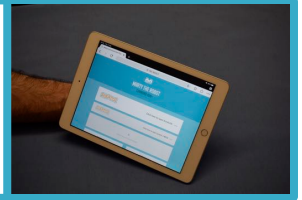
MARTY EDU/CLASS PACK: PRE-BUILT

Getting Started Guide

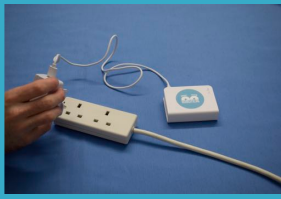
1. Robots have arrived pre-built and connected to the command hub. Each has been called Mary### with corresponding numbers on top of the head as stickers.



6. Open a browser on your programming device and type 192.168.8.1 followed by enter to display the home page for the command hub.



2. Plug in the command hub to a power socket.



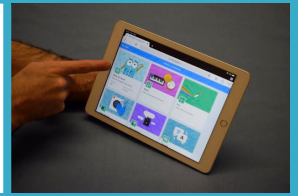
7. Select Scratch 3 and open the list of extensions by clicking on the button in the bottom left.



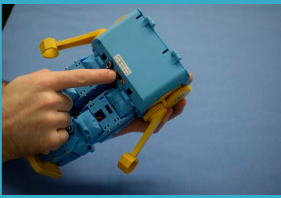
3. Wait for the 3 lights to turn on.



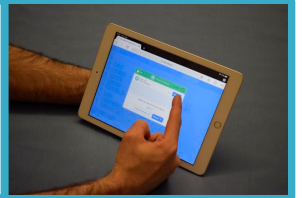
8. Add the Marty the Robot extension.



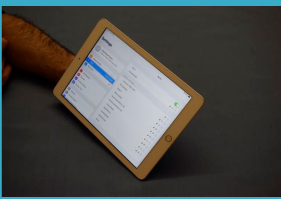
4. One at a time, turn on your Marty(s), waiting 5 seconds between turning each one on.



9. Select the Marty you would like to connect to (check Marty's head to see which number it is)



5. Connect your programming device to the command hub network, *RoboticalHubPlus-2G* with the password *martyrocks*



10. Start Coding!!



If you can't see your Martys on Scratch...

- Check your device is connected to the hub network
- Turn Marty on and off
- Make sure only one command hub is on

If you have any problems or questions, please get in touch,
support@robotical.io