

MARTY EDU/CLASS PACK: KITS

Getting Started Guide

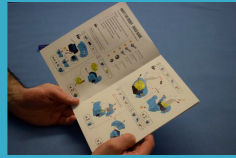
1. Unpack your Marty(s).



10. Name your Marty (if you have several Martys, remember to take note of who is who!)



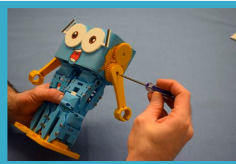
2. Grab your build guide.



12. Follow the in-app instructions to calibrate your Marty.



3. Build your Marty(s).



Repeat step 6 - 12 for each Marty that you have.

4. Plug in the command hub to a power socket.



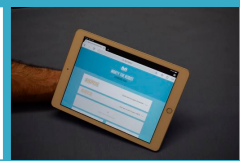
13. Connect your programming device to the hub network, *RoboticalHubPlus-2G* with the password, *martyrocks*



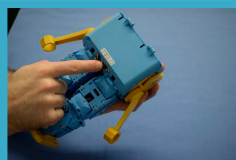
5. Wait for the 3 lights to turn on.



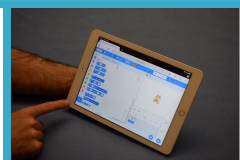
14. Open a browser on your device and type 192.168.8.1 followed by enter to display the command hub home screen.



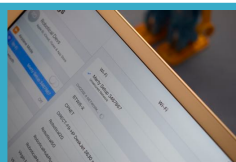
6. Turn on a Marty and wait 10 seconds.



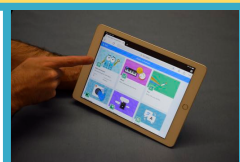
15. Select Scratch 3 and open the list of extensions by clicking on the button in the bottom left.



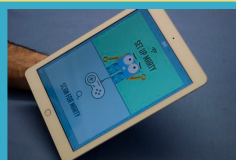
7. Connect your device to the new setup network - *MartySetup####*



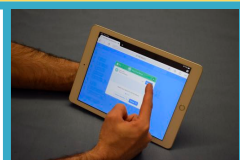
16. Add the Marty the Robot extension.



8. Open the *Marty the Robot* app and choose *Setup Marty*.



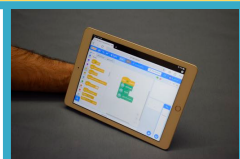
17. Select the Marty you would like to connect to.



9. Choose to connect your Marty to the *RoboticalHubPlus-2G* network with the password, *martyrocks*



18. Start Coding!!



If you have any problems or questions, please get in touch,
support@robotical.io