

SAFETY WARNINGS

PLEASE RETAIN ALL INSTRUCTIONS, LEAFLETS AND MARTY'S PACKAGING FOR FUTURE REFERENCE AS THEY CONTAIN IMPORTANT SAFETY INFORMATION.

- Only use Marty with the supplied rechargeable battery. Rechargeable batteries are only to be charged under adult supervision. Non-rechargeable batteries are not to be recharged. Batteries are to be inserted with the correct polarity. Please see the instruction manual for details of how to connect the battery with the correct polarity. Please retain the instruction manual for future reference.
- Use the supplied USB charging cable. The charging cable is not a toy. Connect charging cable to a USB 5v DC supply. If connecting to a transformer, only use Marty with a transformer for toys. The transformer is not a toy.
- Chargers used with Marty are to be regularly examined for damage to the cord, plug, enclosure and other parts. In the event of such damage, Marty must not be used with the charger until the damage has been repaired.
- Do not disassemble, deform, puncture, short circuit, modify or heat the battery. Improper use can result in fire causing serious injury and property damage.
- Do not immerse Marty or any of Marty's components in water and do not use in an environment where there is a possibility of getting Marty wet.
- Do not reverse the polarity of the battery terminals or try to force the charger and battery connectors together in a way that is not intended.
- Marty contains a "WiFi" (IEEE 802.11) radio transmitting device. Check with relevant authorities and regulations before use.
- Marty contains small parts which may present a choking hazard - not suitable for children under the age of 10.
- Stop using Marty and disconnect the battery immediately if the battery begins to bulge or becomes hot.
- Battery must be charged with the supplied charger only. Never use a modified or damaged charger.
- Marty is only to be connected to Class II equipment bearing the below (★) symbol when applicable.
- Never leave Marty charging unattended. Do not charge Marty for more than 24 hours.
- Keep fingers away from Marty when in use to avoid trapping hazards or injury.
- Never exceed the battery's maximum rated discharge current or charge rate.
- Do not place in mouth, chew or consume any of Marty's components.
- Marty is not a toy, adult supervision is required at all times.
- Do not expose Marty to extreme heat or a naked flame.
- The charging cable and the battery are not toys.
- Avoid excessive physical shock or vibration.
- Do not clean Marty with liquid.



Warning!
Choking Hazard - Small Parts
Not for children under 3 years old

MARTY THE ROBOT

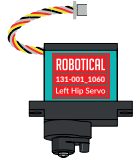
Parts Guide

"Robotical" and "Marty the Robot" are Trademarks (™) of Robotical Ltd. The Robotical Mark is a registered trade mark (®) of Robotical Ltd.

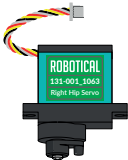
20201123 - 131-001_0118

MARTY THE ROBOT

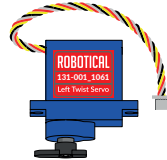
PARTS GUIDE



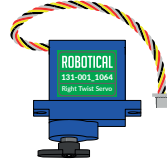
Left Hip Servo - x 1



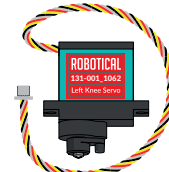
Right Hip Servo - x 1



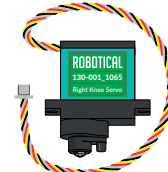
Left Twist Servo - x 1



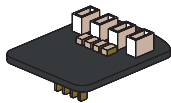
Right Twist Servo - x 1



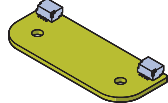
Left Knee Servo - x 1



Right Knee Servo - x 1



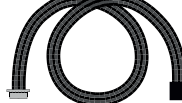
Hip PCB - x 2



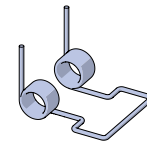
IR Foot Sensor - x 2



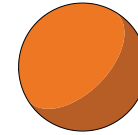
Foot Sensor Cable - x 2



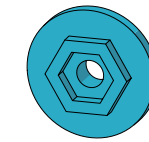
Raspberry Pi Cable - x 1



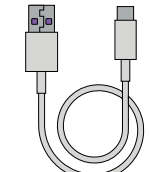
Spring - x 2



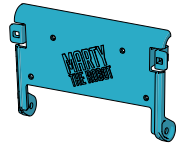
Ping Pong Ball - x 1



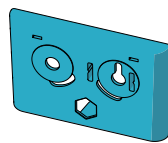
Eye Washer - x 1



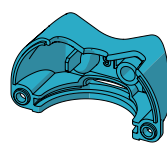
Charging Cable - x 1



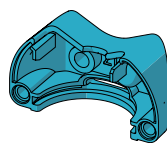
Rear Lid - x 1



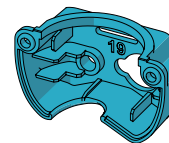
Face - x 1



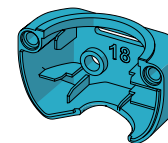
Upper Knee - Male - x 2



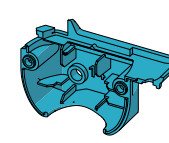
Upper Knee - Female - x 2



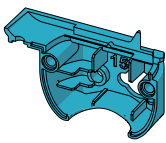
Lower Knee - Male - x 2



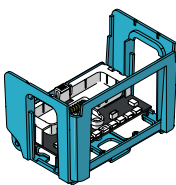
Lower Knee - Female - x 2



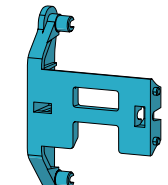
Hip - Male - x 2



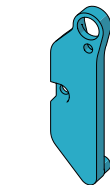
Hip - Female - x 2



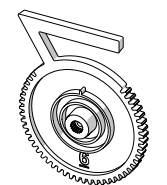
Head - x 1



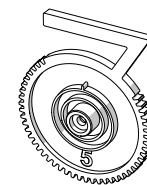
Leg Crossbrace - x 8



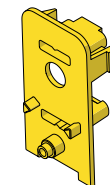
Leg Link - x 8



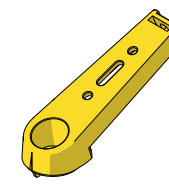
Left Eye - x 1



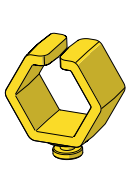
Right Eye - x 1



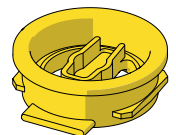
Arm Panel - x 2



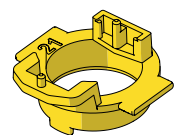
Arm - x 2



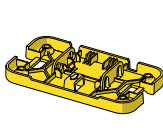
Hand - x 2



Lower Knee Bearing - x 2



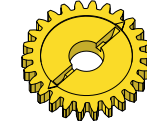
Upper Knee Bearing - x 2



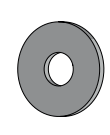
Foot - x 2



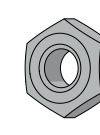
Upper Arm Gear - x 2



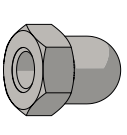
Lower Arm Gear - x 2



Washer - x 2



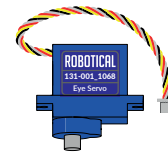
Nut - x 13



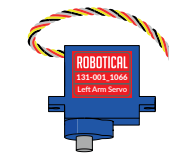
Cap Nut - x 2



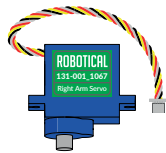
Battery - x 1



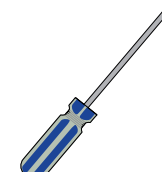
Eye Servo - x 1



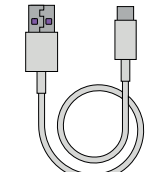
Left Arm Servo - x 1



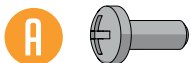
Right Arm Servo - x 1



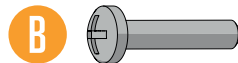
Screwdriver - x 1



Charging Cable - x 1



Body Screw
x 27



Arm Screw
x 2



Shoulder/Eye Screw
x 2